




# Beach Monitoring in Michigan

in less than 5 minutes...

**Shannon Briggs**

**517-335-1214**

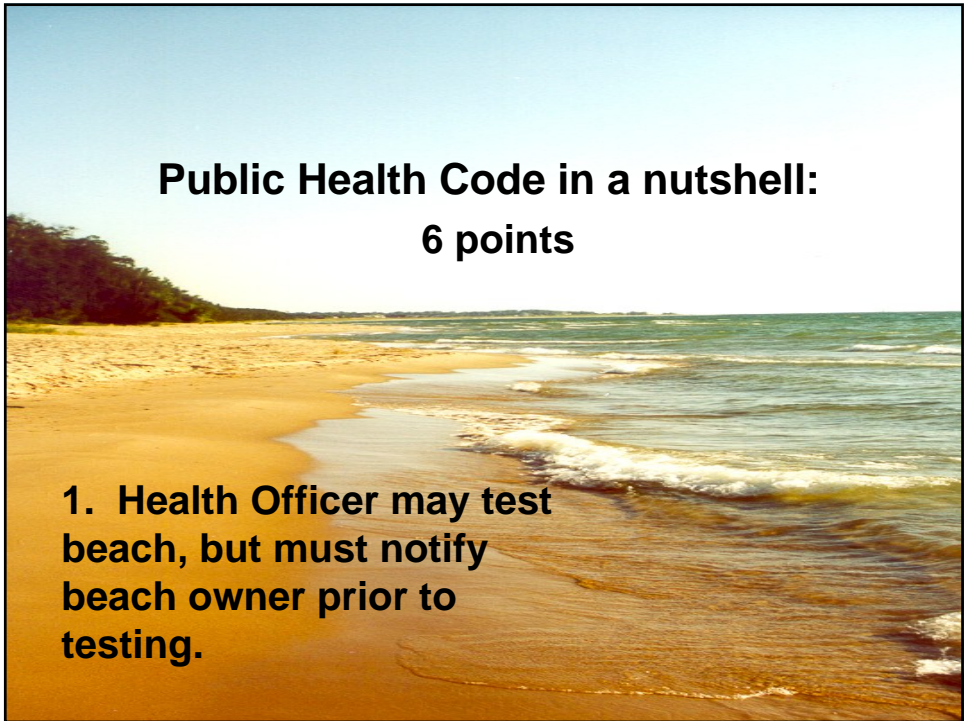
**briggssl@michigan.gov**



Health Code requirements

Sharing *E. coli* data


Beach Status per '03 & '04






**Public Health Code in a nutshell:  
6 points**

**2. Beach water testing is conducted according to promulgated standards consistent with US EPA.**




**Public Health Code in a nutshell:  
6 points**

**3. Test results must be reported within 36 hours of collecting water sample.**



**Public Health Code in a nutshell:  
6 points**

**4. Posted signs state whether the beach is monitored or not at all beaches offered to the public.**



**Public Health Code in a nutshell:  
6 points**

**5. Posted signs also state where testing results can be found if beach is monitored.**

## Example of Posted Sign

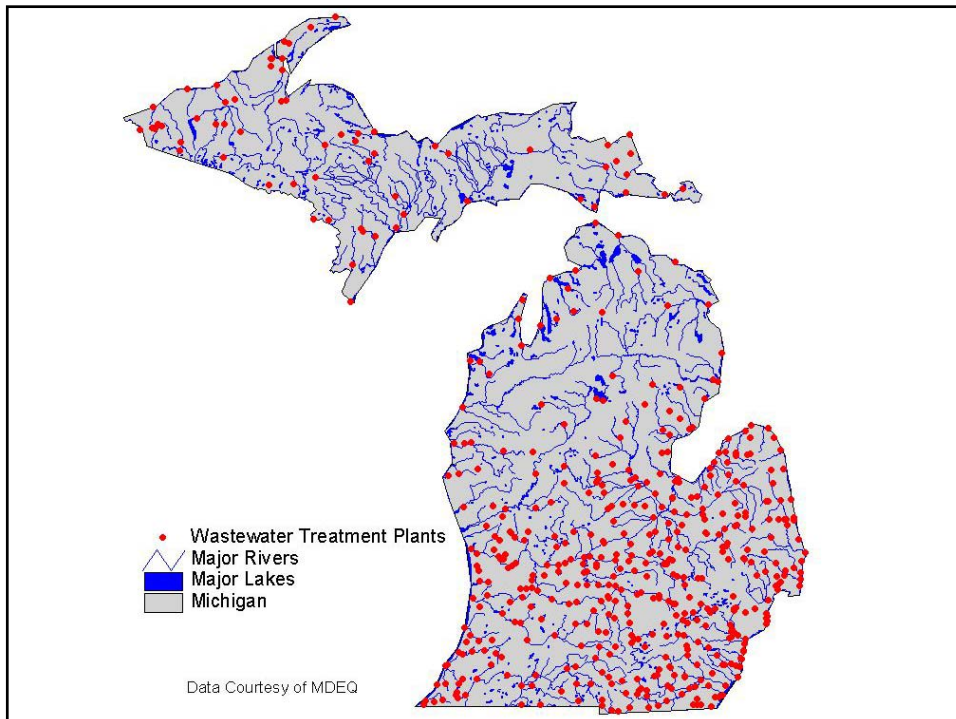


## Public Health Code in a nutshell: 6 points

**6. Health officer has the authority to close a beach and may petition the court if needed.**

# Sharing Data Between Programs

WWTP, NPDES, IDEP,  
TMDLs,  
CAFOs,  
Septic Tanks,  
Enforcement, LAMPs,  
Beaches, and Drinking Water







## Septage Issues



New CAFO General Permit Available for Public Comment, Two Public Hearings Scheduled - Microsoft Internet Explorer

Address: <http://www.michigan.gov/deq/0,1607,7-135-3308-89443--,00.html>

**DEQ** Department of Environmental Quality **Michigan.gov**  
An Official State of Michigan Web Site

[Michigan.gov Home](#) | [DEQ Home](#) | [Online Services](#) | [Permits](#) | [Programs](#) | [Site Map](#) | [Contact DEQ](#) Search

**news & events** **PRINTER Friendly**

Bulletins & Newsletters  
Calendar  
Press Releases  
Citizen Involvement  
Training and Workshops

inside DEQ  
key topics  
pollution prevention

**AIR**  
**LAND**  
**WASTE**  
**WATER**

**Contact:** Media Contact: Robert McCann (517) 335-7217  
Resource Contact: Michael Bitondo (517) 335-3303  
**Agency:** Environmental Quality

**New CAFO General Permit Available for Public Comment, Two Public Hearings Scheduled**

March 26, 2004

Today, the Department of Environmental Quality released for public comment a new general National Pollutant Discharge Elimination System (NPDES) permit for new Large Concentrated Animal Feeding Operations (CAFOs), and announced public hearings on the permit. This new general permit has been developed to complement DEQ Director Steven E. Chester's February 27, 2004, Final Determination and Notice that directs certain new large CAFOs to get individual permits, and other new large CAFOs to obtain coverage under the general permit for new large CAFOs. In order to constitute a valid authorization, the general permit must be complemented by a certificate of coverage issued by the DEQ to an individual facility.

The general permit allows for the discharge of wastewater under very limited circumstances involving certain precipitation events and also lists prohibited discharges.

Construction of manure and wastewater containment structures using a composite liner design is required, and the permit specifies the design factors. Also included is a requirement to have a minimum of six months of storage available at the beginning of winter.

**Related Content**

- > [DEQ Announces Pollution Prevention Grants](#)
- > [Nonpoint Source Pollution Grants Announced](#)
- > [Governor Calls on Federal Government to Protect the Great Lakes...](#)
- > [Grand Rapids Companies Ordered to Pay State Cleanup Costs](#)
- > [EPA Selects DEQ as Award Recipient](#)
- > [Spring 2004 Weather Conditions and Recent Flooding](#)
- > [Michigan's Clean](#)

Enforcement - Microsoft Internet Explorer

Address http://www.michigan.gov/deq/0,1607,7-135-3313\_3662\_3712---,00.html

**DEQ** Department of Environmental Quality **Michigan.gov**  
All Official State of Michigan Web Sites

Michigan.gov Home | DEQ Home | Online Services | Permits | Programs | Site Map | Contact DEQ

**WATER**

- Biosolids & Industrial Pretreatment
- Drinking Water
- Emergency Response for Releases to Water
- Great Lakes
- Groundwater Discharge
- Groundwater Modeling
- Inland Lakes & Streams
- Mosquito Control Projects
- Surface Water**
  - Annual Wastewater Reporting
  - Enforcement**
  - NPDES Permits
  - Nonpoint Source Pollution
  - Water Quality Trading
  - Septage
  - Sanitary and Combined Sewer Overflow

**Enforcement**

**Water Division Enforcement Unit**  
The Enforcement Unit is responsible for conducting all escalated enforcement actions taken by the division. These actions are conducted in response to violations of state water pollution control statutes and rules, violations of surface water discharge permits, and any violations of administrative or judicial orders. > More

**Information**

- Enforcement Unit Contact Names
- Penalty Summaries
- Fiscal Year 2003 Settled Cases

**Laws & Rules**

- Environmental Regulations
- Part 31 Water Resource Protection
- Part 41 Sewage Systems
- NREPA

**Online Services**

- Water Division Enforcement Order Summaries and Current Contested Cases Hearings

**Related Links**

- Indiana University Virtual Law Library
- University of Michigan Law
- Envirobiz Press Releases
- Thomas Legislative Information
- U.S. EPA Office of Water
- Great Lakes Information Network (GLIN)

**Quick Links**

- DEQ Training & Workshops
- Contact Information for Surface Water Enforcement





A sunset over the ocean with a dark sky transitioning to a bright orange and yellow glow at the horizon. The water is dark with some whitecaps visible.

Beaches in database	2003	2004
Inland	405	465
Great Lake	319	329
Total	724	794



A sunset over the ocean with a dark sky transitioning to a bright orange and yellow glow at the horizon. The water is dark with some whitecaps visible.

Monitored Beaches	2003	2004
Inland	208	292
Great Lake	184	199
Total	392	491

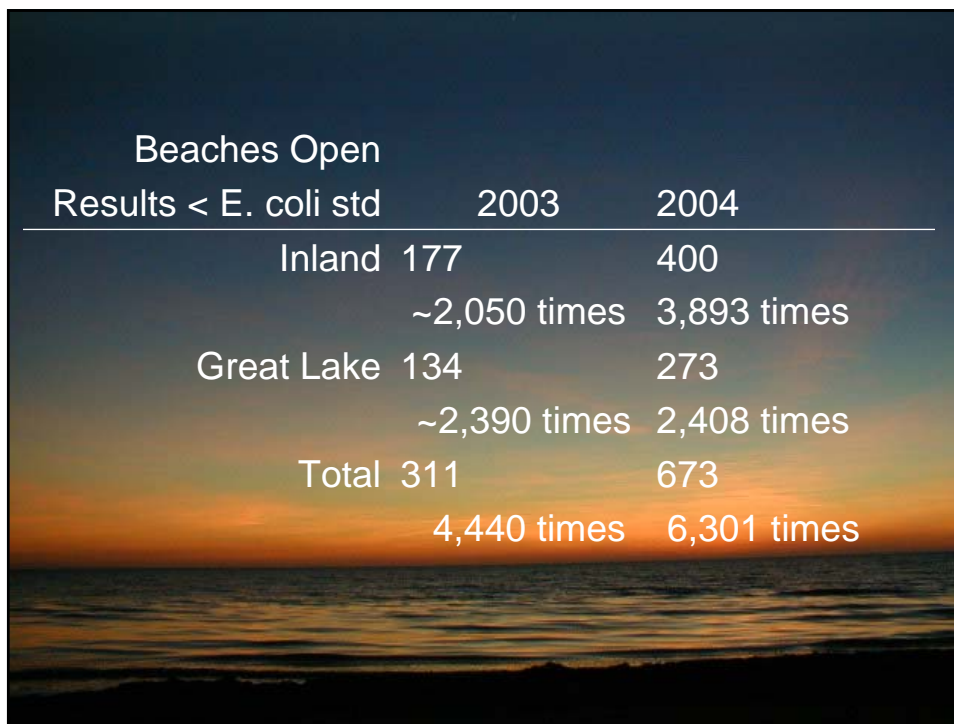


Batting Average	2003	2004
Inland	.978	.973
Great Lake	.959	.960
Total	.969	.968

You can have a great batting average and still lose the game.



Beaches Closed	2003		2004	
Results > E. coli std				
Inland	31	53 times	65	106 times
Great Lake	50	87 times	56	100 times
Total	81	140 times	121	206 times



Beaches Open		2003	2004
Results < E. coli std			
Inland	177	400	
	~2,050 times	3,893 times	
Great Lake	134	273	
	~2,390 times	2,408 times	
Total	311	673	
	4,440 times	6,301 times	



Next Year?

Add more beaches  
Increase monitoring  
Remain hopeful for rapid test